

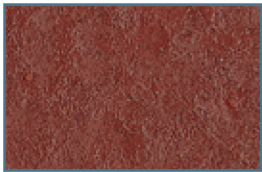


# CLEMONS CONCRETE COATINGS

## SUPER SEALER STAINS

### Solid Color & Semi-Transparent Sealers For Concrete

For Glossy Clear Finish, Apply Final Coat With **Top Coat**



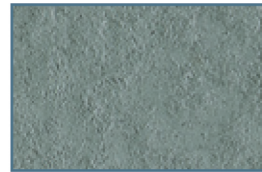
**TILE RED**



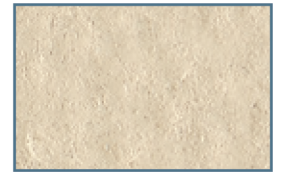
**WALNUT**



**BLACK**



**HAZY BLUE**



**HARVEST**



**BRICK**



**NUTMEG**



**CHARCOAL**



**BATTLESHIP**



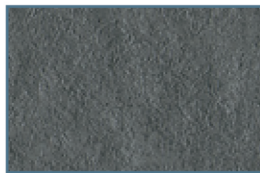
**ADOBE BUFF**



**TERRA COTTA**



**AUTUMN**



**DARK GRAY**



**PEACH**



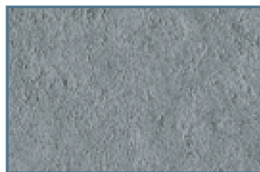
**COOL WHITE**



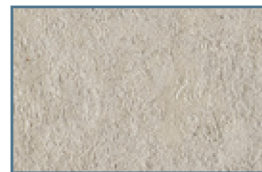
**MAPLE**



**SAND BUFF**



**STORM GRAY**



**KHAKI**



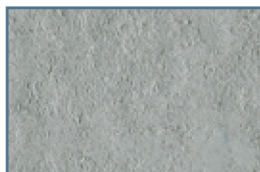
**ANTIQUE WHITE**



**FIESTA**



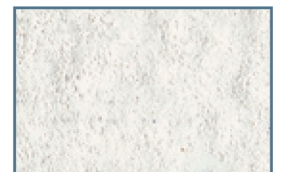
**SANDSTONE**



**PEWTER**



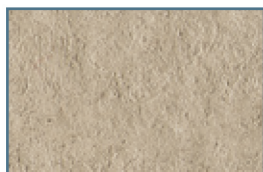
**SABLE**



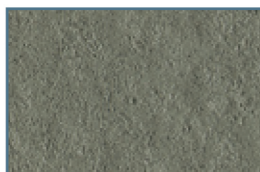
**WHITE**



**DESERT TAN**



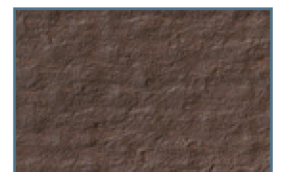
**SUN BUFF**



**SLATE**



**NEW GRAY**



**BRUNETTE**

For more information: [www.clemonsconcretecoatings.com](http://www.clemonsconcretecoatings.com)

# SUPER SEALER STAINS

## PRODUCT DESCRIPTION

**SUPER SEALER STAIN** is a solvent-based pure acrylic resin stain formulated especially for concrete. It dries to a semi-gloss and resists staining. **SUPER SEALER STAIN** is packaged in 1-gallon and 5-gallon containers. For added protection and depth of gloss, finish with clear **TOP COAT**. Colors are available in Semi-Transparent solvent-based **SUPREME SEAL-25** pre-mixed and in Tint Packs.

## GENERAL USES

- ★ Fully cured concrete
- ★ Broomed/textured finishes
- ★ Smooth-troweled finishes (pre-etching required)
- ★ Interior and exterior surfaces (good ventilation and etching of concrete is required for interior applications)

## FEATURES

- ★ Penetrates the surface for a good bond
- ★ Uniform appearance
- ★ Resistant to most oils and greases
- ★ Rejuvenates old concrete
- ★ Quick-drying
- ★ Seals and protects the surface
- ★ Water resistant
- ★ Hides "undesirable" appearances

## SURFACE PREPARATION

Surfaces must be cleaned prior to application. If oily, clean with Clemons **CLEANER DEGREASER NEUTRALIZER**. Etch smooth concrete with Clemons **ETCH & CLEAN**. Rinse thoroughly. Allow a day to dry. Sample a spot before proceeding to ensure color and compatibility are acceptable. Apply **SUPER SEALER STAIN** to cured concrete. Dusty concrete surfaces are not suitable for coating application.

## APPLICATION

Apply the coating with an airless sprayer or roller. Brushes may be used to cut in tight areas. One coat will yield an opaque finish, and two coats will give a glossier, painted look. For clear glossy finish, apply **TOP COAT**. Cross roll to avoid lap lines. Box cans by mixing cans during application to ensure consistent color. For garages and other interior concrete floors, applying **SUPER WAX** will add slip resistance and protect from scratching.

**SUPER SEALER STAIN** HOW TO VIDEO please visit [www.ccc-usa.com](http://www.ccc-usa.com)

## COVERAGE RATES

Finish	1st Coat	2nd Coat
Broom Swept:	200 ft <sup>2</sup> per gallon	250 ft <sup>2</sup> per gallon
Stamped:	200 ft <sup>2</sup> per gallon	250 ft <sup>2</sup> per gallon
Smooth troweled:	250 ft <sup>2</sup> per gallon	300 ft <sup>2</sup> per gallon
Block:	100 ft <sup>2</sup> per gallon	150 ft <sup>2</sup> per gallon

## SLIP RESISTANCE

On any concrete floor, you may add **SUPER GRIP** non-skid paint additive. Follow directions on non-skid additive and do not overload system. When using a non-skid additive it should be added to second coat. All non-skid additives shorten the life of the film to some degree.

## LIMITATIONS

- ★ Refer to Material Safety Data Sheet prior to use.
- ★ Apply only when surface and air temperatures are between 50° F and 90° F.
- ★ Do not use caustic, corrosive, citrus-based, or ammonia detergents to clean the sealed surface.
- ★ Gasoline and hot solvents will melt stain. See NOTE below.
- ★ Should not be used on slabs to receive bonded toppings.
- ★ Do not over-apply.
- ★ Rubber-wheeled tires may leave marks.
- ★ Dusty concrete surfaces are not suitable for coating application.

## TECHNICAL INFORMATION

Solids: 38%	Pounds/Gallon: 8.9	Tack-free @ 73° F, 50% RH: 1 hour
Recoat Time: 3-4 hours	Foot Traffic: 24 hours	Vehicle Traffic: 72 hours
Solvent: Aromatic Hydrocarbon (Low VOC: PCBTF)	Flashpoint: 105° F	VOC Content (Federal): <600 g/L
Finish: Semi-gloss	Resin: Acrylic	Low VOC (OTC, LADCO): <400 g/L
Color: As labeled	DOT: Not Regulated <119 gallons	

## CLEANUP

Clean tools with an aromatic solvent such as A1 Solvent or Xylene.

**NOTE:** Gasoline and other auto parts cleaners containing hot solvents will melt stain. Wiping will smear stain. Allow to dry. Either leave for protection or re-coat with stain for best appearance. If floor will be regularly exposed to chemicals, it is highly recommended that you test a spot before proceeding with whole floor. It is recommended to wait 2 weeks before placing rubber or plastic feet on sealed smooth surfaces.

**CAUTION:** Contains combustible solvents. Provide adequate ventilation and avoid sparks and open flames. Continue to ventilate after installation until all vapors have been removed. For skin contact, wash affected area with soap and water. For eye contact, flush with water for at least 15 minutes and seek medical attention.

**DISCLAIMER:** Since manufacturer has no control over handling, use or storage; no guarantee expressed or implied, is offered. The suitability of the product for use shall be solely up to the user. Manufacturer retains the right to venue.

Made in USA

**CLEMONS CONCRETE COATINGS**

505 Cave Road ★ Nashville, TN 37210 ★ [www.ccc-usa.com](http://www.ccc-usa.com) ★ Tel: 615-872-9099 ★ Fax: 615-872-9052